

20-20 Design Version 10 Installation Guide

The following guide is designed to aid you with the installation of 20-20 Design Version 10.2. This includes DVD2 which installs the IT Bureau enhancements, textures and catalogue(s).

Between versions? Whether you're currently using version 8 or 9; 10 easily installs in a separate directory allowing you to switch between versions at any given time. So you can enjoy the luxury of having both available to work in; or slowly transition between each until you become more familiar with the new interface.

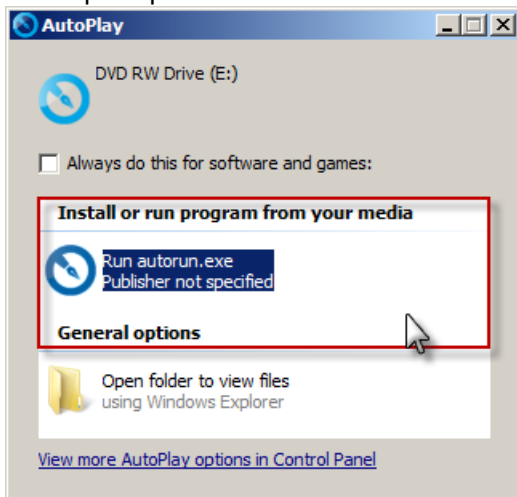
Prior to installation please see that your computer meets the minimum requirements to avoid further issues. [Click here to view computer system requirements](#) or see our support page at www.2020design.co.nz

To proceed with the installation, see that you have DVD1:20-20Design10.2, DVD2:V10.2 Enhancement Tool

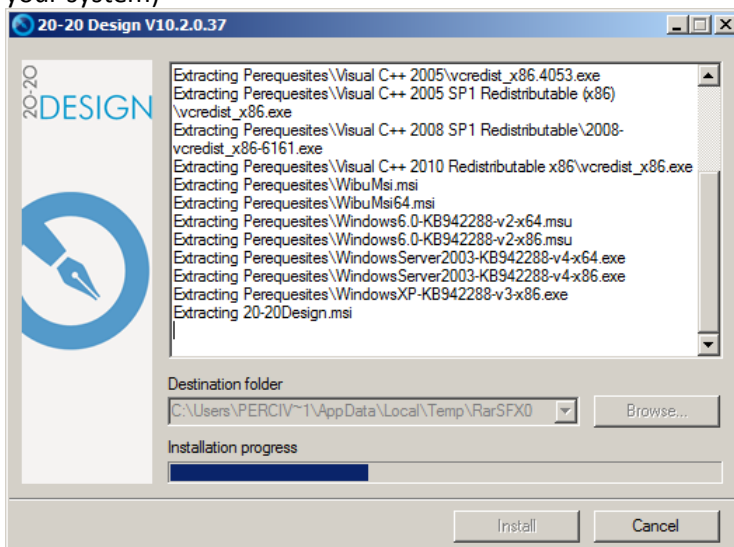
DVD1 Installation

1. Insert DVD1 labelled 20-20 Design Version 10.2

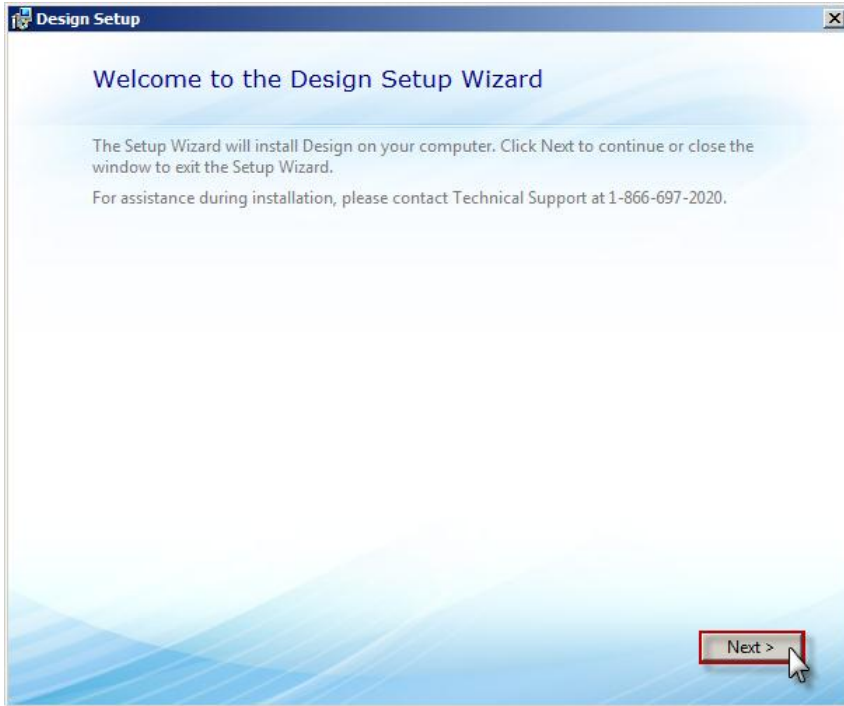
When prompted left-click **Run autorun.exe** (or navigate to the content of your DVD and double left-click)



2. Please allow time for prerequisites to be installed (this will vary depending on the required prerequisites and your system)

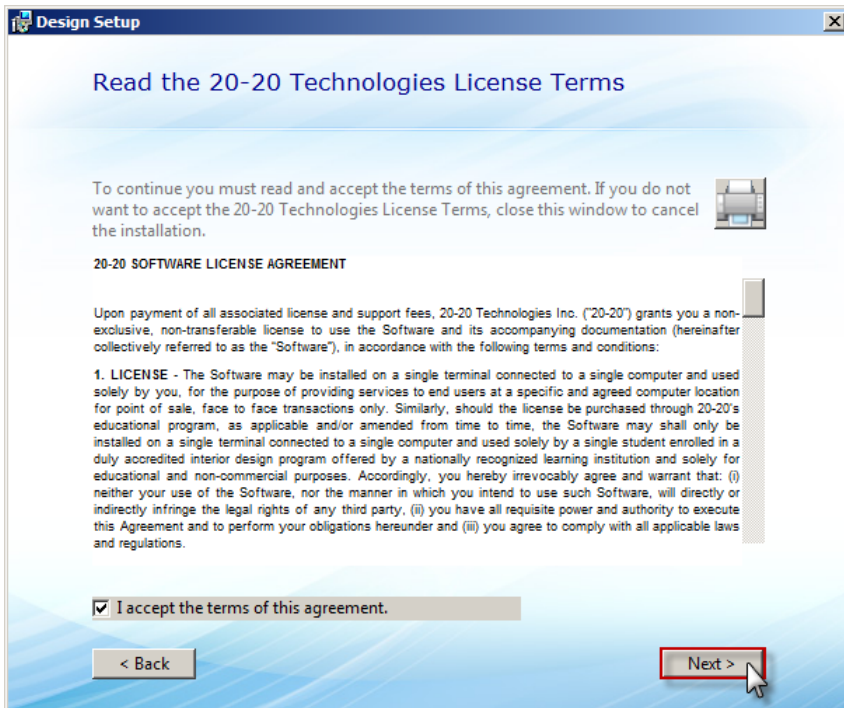


3. Left-click



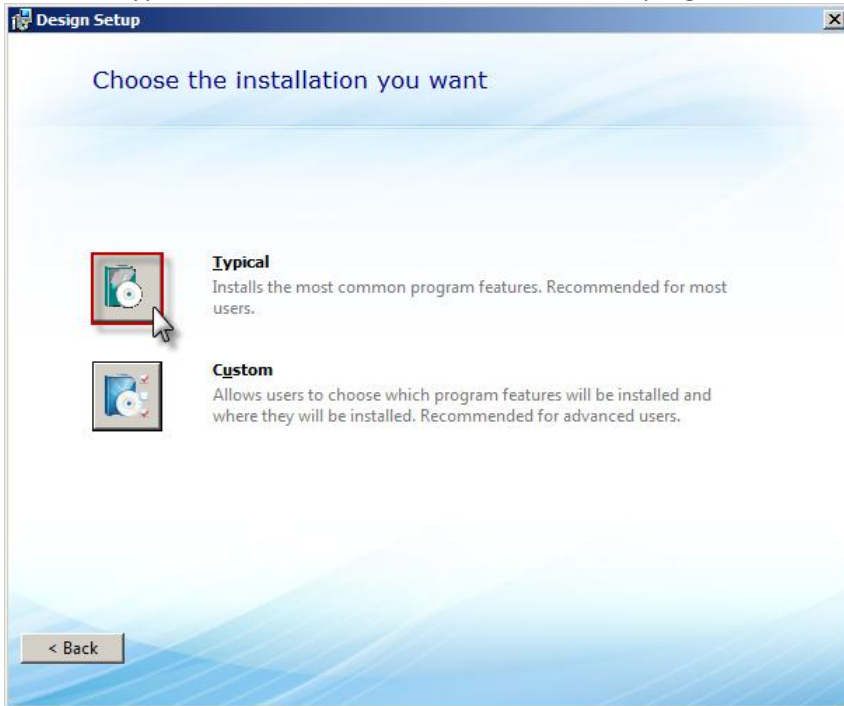
4. Left-click the check box to accept the terms of this agreement I accept the terms of this agreement.


Left-click





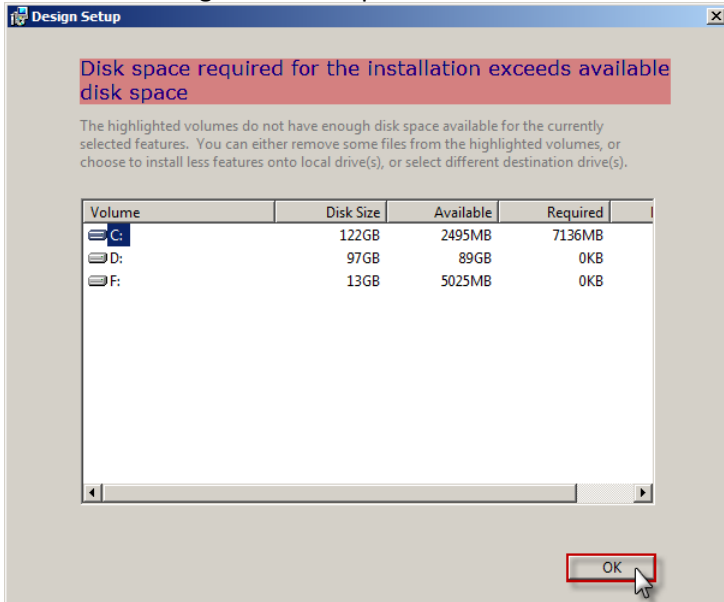
5. Left-click Typical to install the most common program features. Recommended for most users.




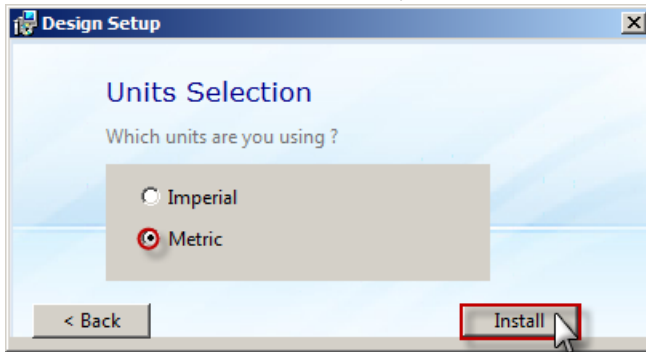
6. Please ensure that you have sufficient disk space for installation. In the event where installation exceeds available disk space (shown below), left-click 

Here you might be required to clear space on your hard-drive before proceeding with installation

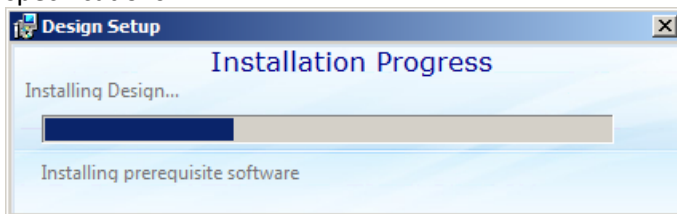
Installation will ignore this step where there is sufficient disk space



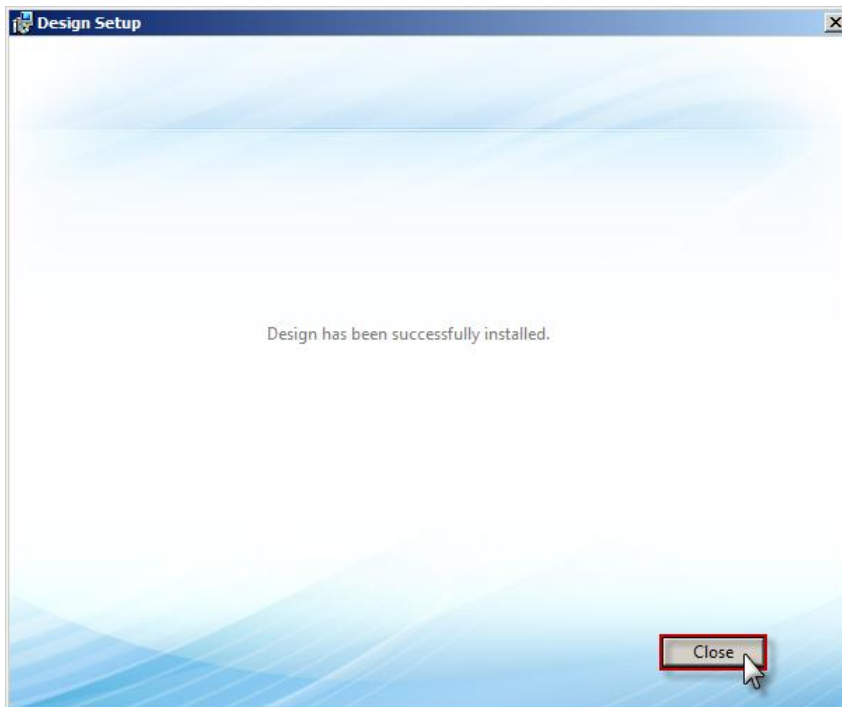
7. Left-click the radio button Metric, left-click 



8. Allow 10 minutes time for installation to complete. Time can vary depending on your computer's specifications



9. Left-click 



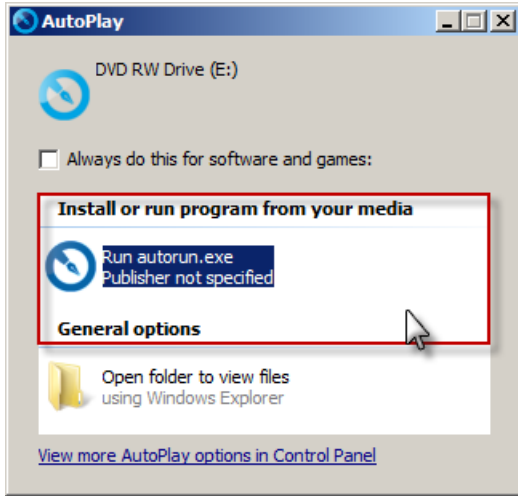
Congratulations you have successfully installed 20-20 Design Version 10.2 DVD 1

Eject your DVD1 and insert DVD2 labelled V10.2 Enhancement Tool

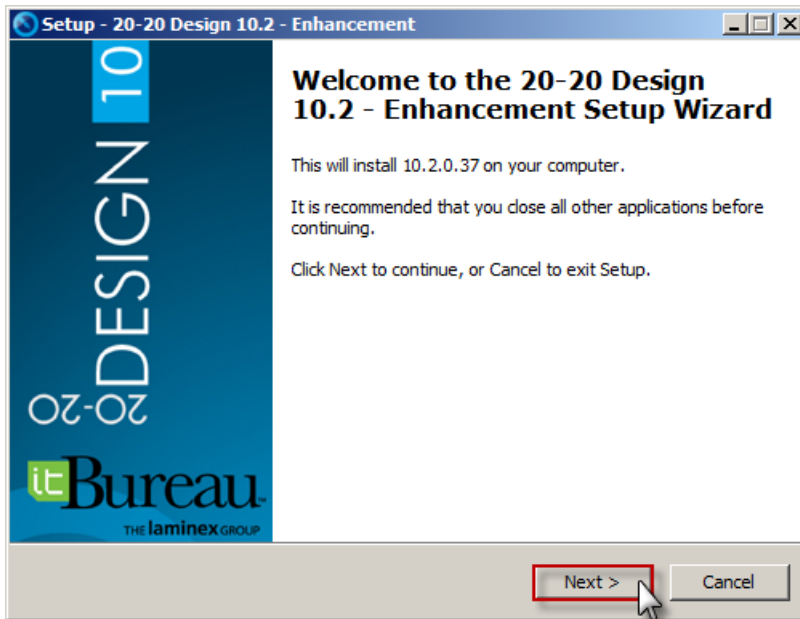
DVD2 Installation

1. Insert DVD2 labelled V10.2 Enhancement Tool

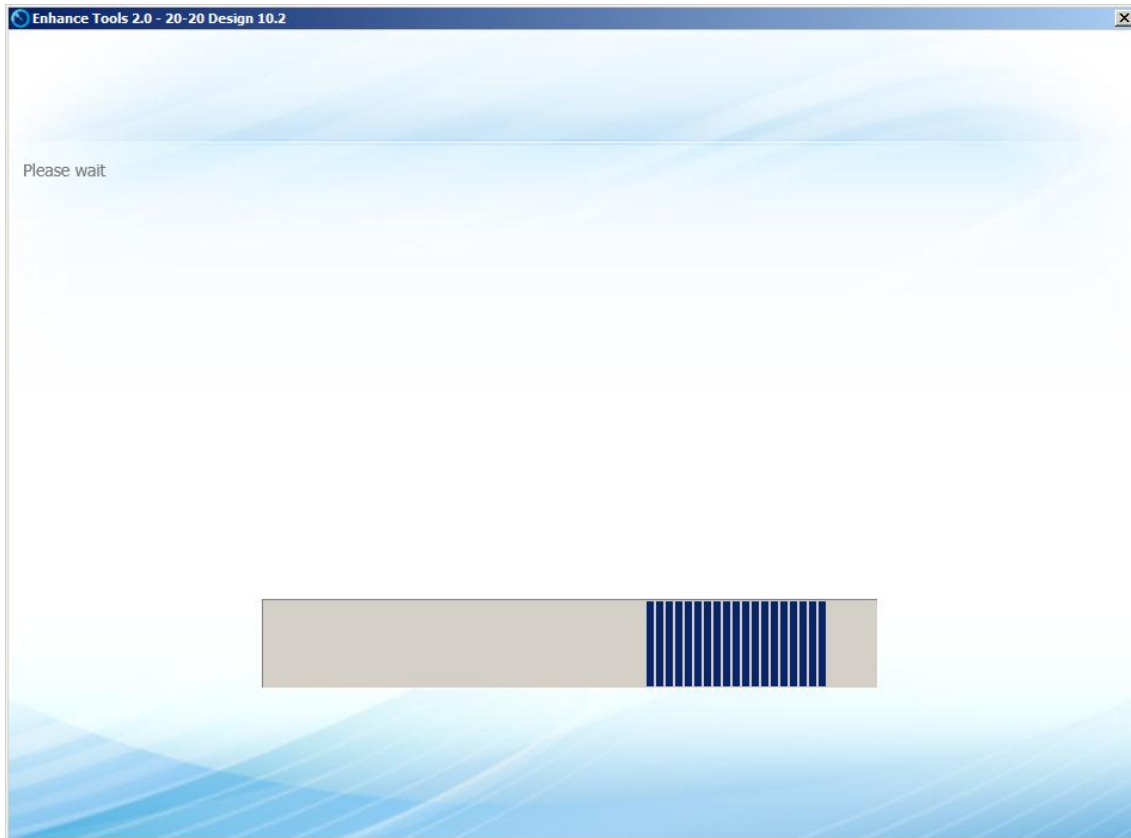
When prompted left-click **Run autorun.exe** (or navigate to the content of your DVD and double left-click)



2. Left-click

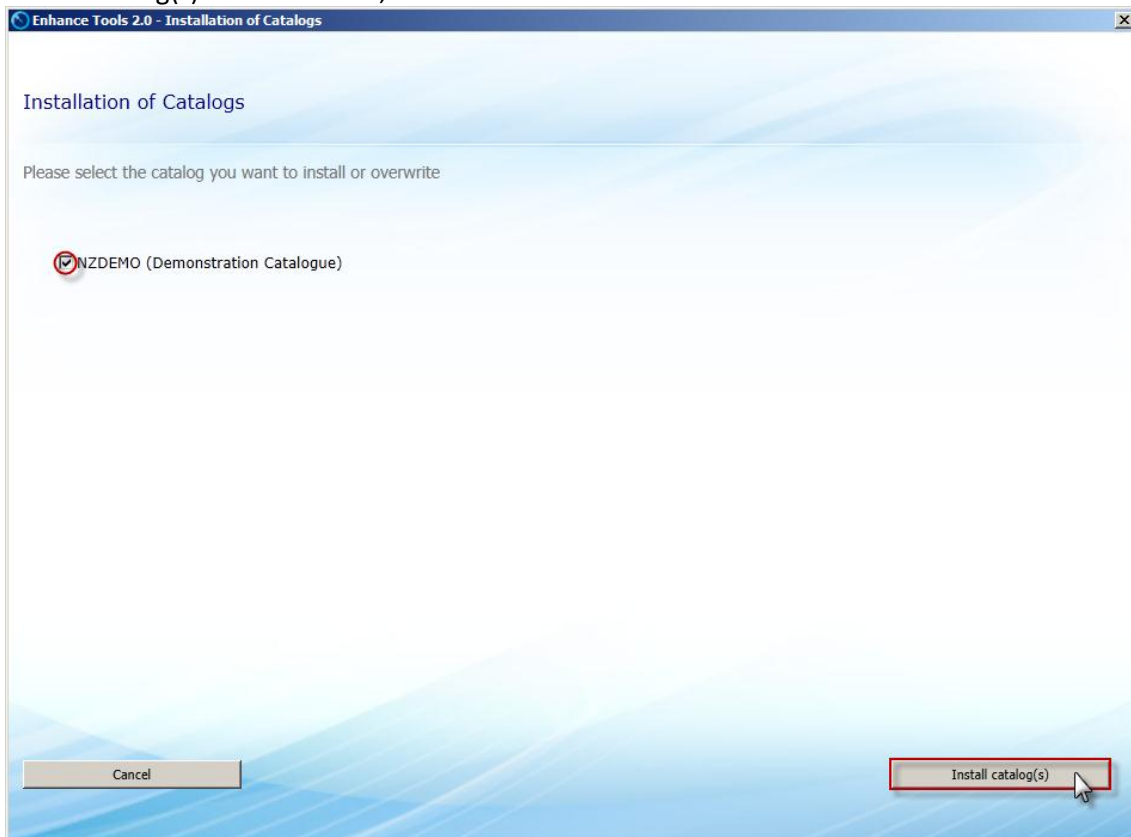


3. Please allow time for installation to start

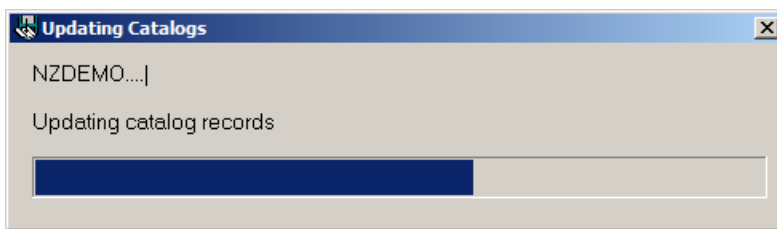
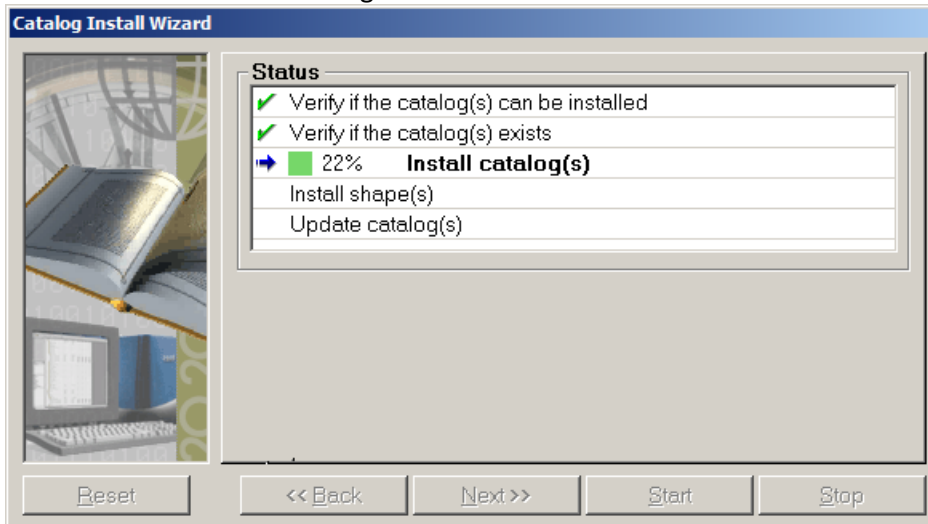


4. Select catalog(s) for installation, left-click

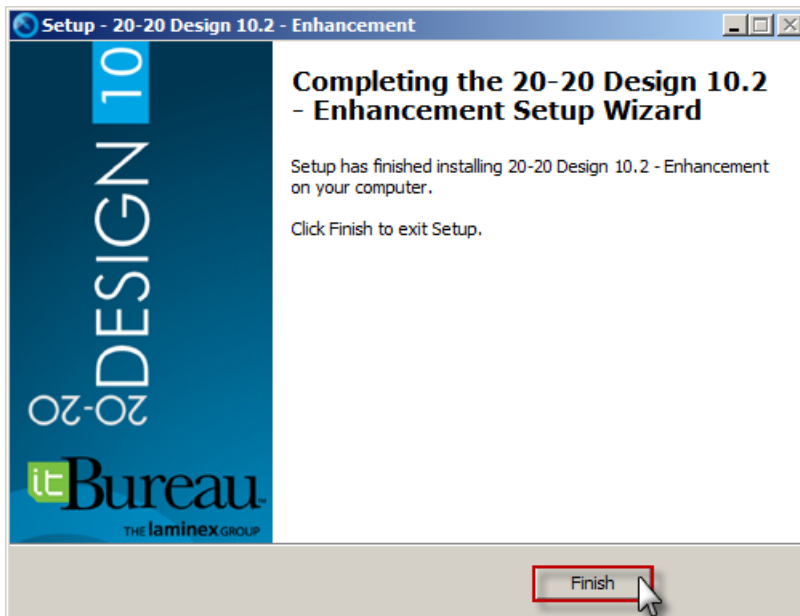
Install catalog(s)



5. Allow time for selected catalogues to install



6. Left-click 



Congratulations you have successfully installed DVD2 V10.2 Enhancement Tool